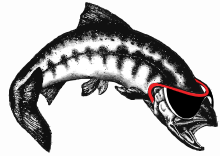


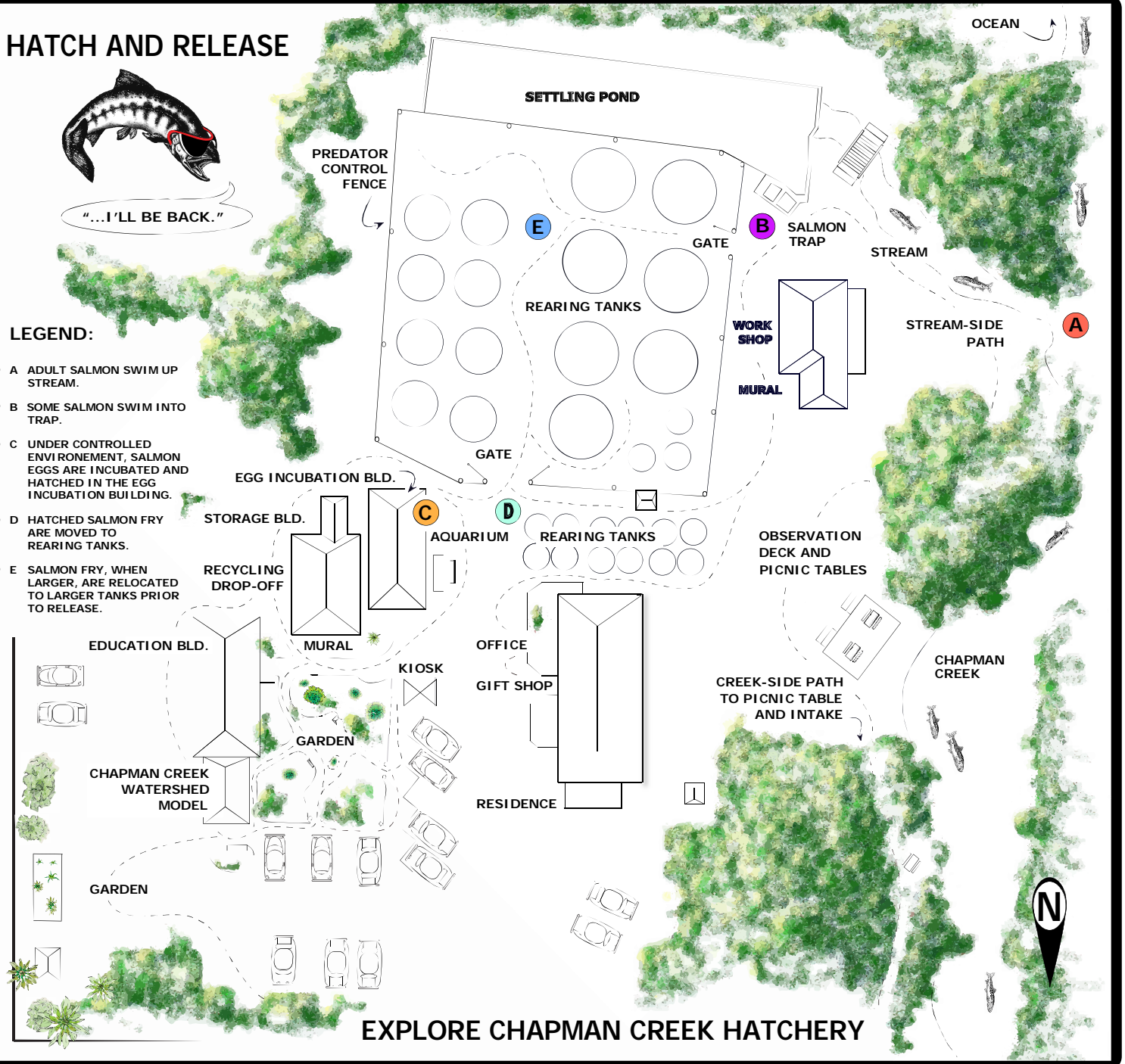
HATCH AND RELEASE



"...I'LL BE BACK."

LEGEND:

- A ADULT SALMON SWIM UP STREAM.
- B SOME SALMON SWIM INTO TRAP.
- C UNDER CONTROLLED ENVIRONMENT, SALMON EGGS ARE INCUBATED AND HATCHED IN THE EGG INCUBATION BUILDING.
- D HATCHED SALMON FRY ARE MOVED TO REARING TANKS.
- E SALMON FRY, WHEN LARGER, ARE RELOCATED TO LARGER TANKS PRIOR TO RELEASE.



EXPLORE CHAPMAN CREEK HATCHERY